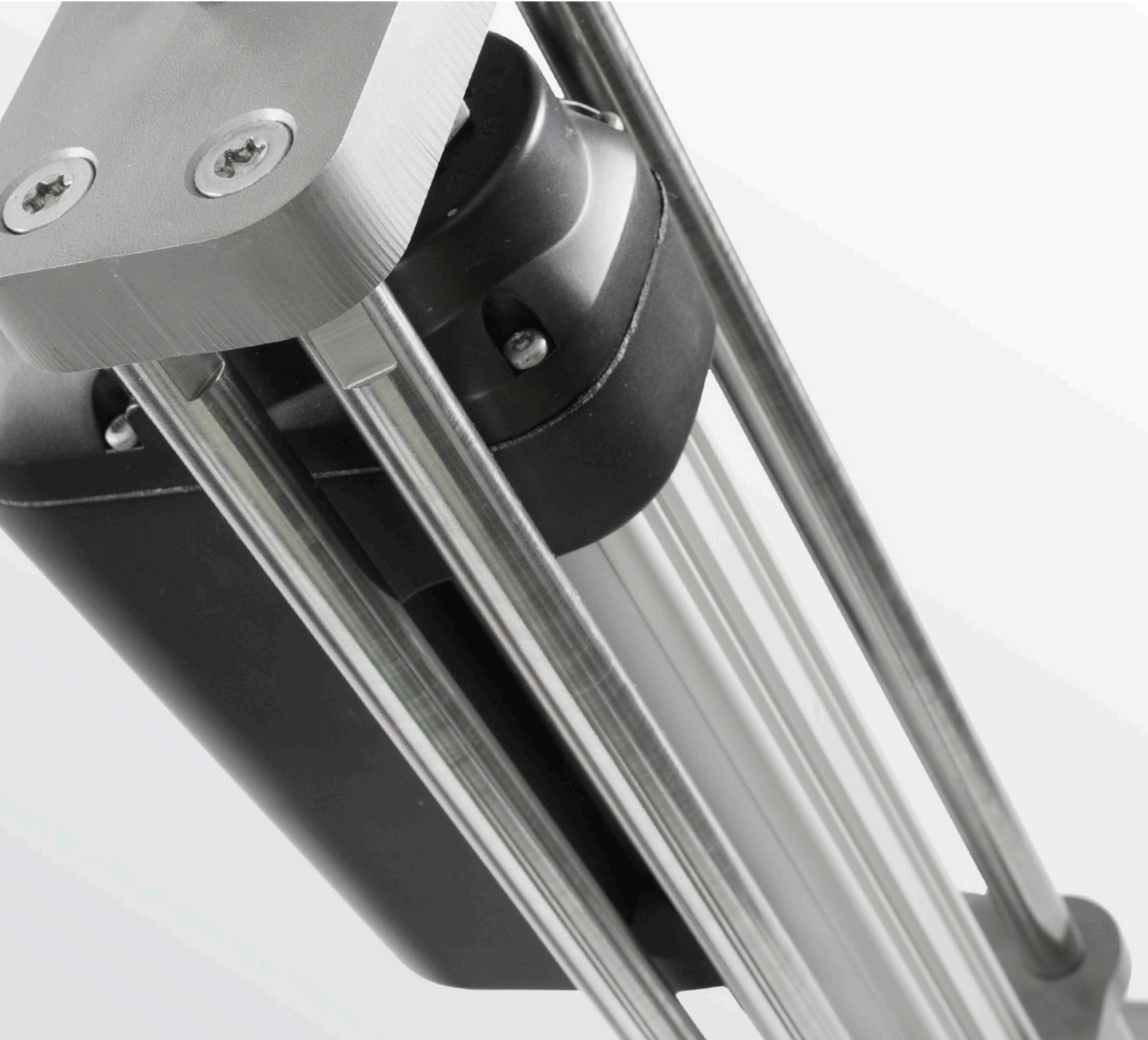


Electrical actuator type LINAK



Electrical actuator type LINAK

Linak's electric actuator is a compact maintenance free unit for on/off operations with a speed 7-11 mm/sec. It is available as standard in a 24 V DC version but it can also work on 230 V AC or 120 V AC if it is supplied with a control unit/transformer. The actuator unit features a solid stainless steel structure holding the actuator in exactly correct position during operation. It can be supplied on Stafsjö's WB11, WB14, WB14E and MV knife gate valves from DN 50 (2") up to DN 300 (12").

Actuator unit

Type: LA36
Protection Class: IP66
CE: Yes
Speed: 7-11 mm/sec
Supply voltage: 24 V DC
Intermedient: max. 5 % (1 min. drive and 19 min. rest)
Ambient operating temperature: -30°C to +65°C
Load: Push 10000 N, Pull 10000 N
Self Lock: 13000 N
Mechanical overload protection through integrated slip clutch
Manual hand crank
Body in aluminum
Piston in stainless steel AISI 304
Valve adapter and assembly parts in stainless steel AISI 304



Control units

The Linak actuator can be supplied with three different control units/transformers, all to be operated manually directly on the unit or remote operated via a cable of which two is available with push buttons for open/stop/close. An external battery back-up WCU-UPS can as option be connected to the WCU to ensure an always fully operational valve unit in case of failure in the main power supply.

WCU LIGHT for analog and digital communication:

Type: WCU Light TREM-0000-0085-DK with option for DIN rail mounting TREM-0000-0091-DK
Protection Class: IP66
CE: Yes
Signal out: In end positions
Housing material: Poly Carbonat
Protection class: IP 66
Control signal: Analog 4-20 mA or digital ON/OFF (Always 4-20 mA FB signal)
Display: On the PCB visual through the lid showing actual valve position (0-100 %)
Signals: overcurrent, manual/auto
Fuse: 1.6 Amp (Ø5x20 mm)
Max. current: 13 Amp
Intermittens: Max. 10 %
Output voltage: 24 V DC
Supply voltage: 230 V AC with option in 120 V AC
Ambient operating temperature: 5°C to +40°C



WCU BASIC for analog and digital communication:

Type: WCU Basic TREM-0000-0064-DK

Protection Class: IP66

CE: Yes

Display: In front showing actual valve position (0-100 %)

Push buttons for open/close/stop

Housing material: Poly Carbonat

Protection class: IP 66

Signal out: In end positions

Control signal: Analog 4-20 mA or digital ON/OFF

(Always 4-20 mA FB signal)

Fuse: 1.6 Amp (Ø5x20 mm)

Max. current: 13 Amp

Intermittens: Max. 10 %

Output voltage: 24 V DC

Supply voltage: 230 V AC with option in 120 V AC

Ambient operating temperature: 5°C to +40°C

**WCU BASIC BUS for Profi Bus communication:**

Type: WCU Bus TREM-0000-0067-DK

Protection Class: IP66

CE: Yes

Display: In front showing actual valve position (0-100 %)

Push buttons for open/close/stop

Housing material: Poly Carbonat

Protection class: IP 66

Signal out: In end positions

Control signal: Analog 4-20 mA or digital ON/OFF

(Always 4-20 mA FB signal)

Fuse: 1.6 Amp (Ø5x20 mm)

Max. current: 13 Amp

Intermittens: Max. 10 %

Output voltage: 24 V DC

Supply voltage: 230 V AC with option in 120 V AC

Ambient operating temperature: 5°C to +40°C

**External battery back-up WCU-UPS**

Type: TREM-0000-0065-DK

Power supply: 23-34 V DC

Power consumption - Connected: Max 0,9 Amp. (Charging), 0,25 mA (standby)

Battery: 2x VRLA 12V-1,2 Ah

Power consumption - Battery: 4 mAmp standby, sleep mode 0,5 mAmp

Output: 5 Amp (continuous), 12 Amp 5 min., 15 Amp 10 sek.

Charging current: Max. 0,5 Amp

Output type: PNP max. 20 mA

Further information is available on www.stafsjo.com



Stafsjö
SINCE 1666



**Valve
& Automation**

Total Valve & Control Solutions®

VEREENIGING

Tel: 011 397 2833

Fax: 011 397 4700

DURBAN

Tel: 031 579 2593

Fax: 031 579 2562

South Africa:

0861 103 103

E-mail: sales@valve.co.za

Exports:

africaexports@valve.co.za

www.valve.co.za



SCAN ME